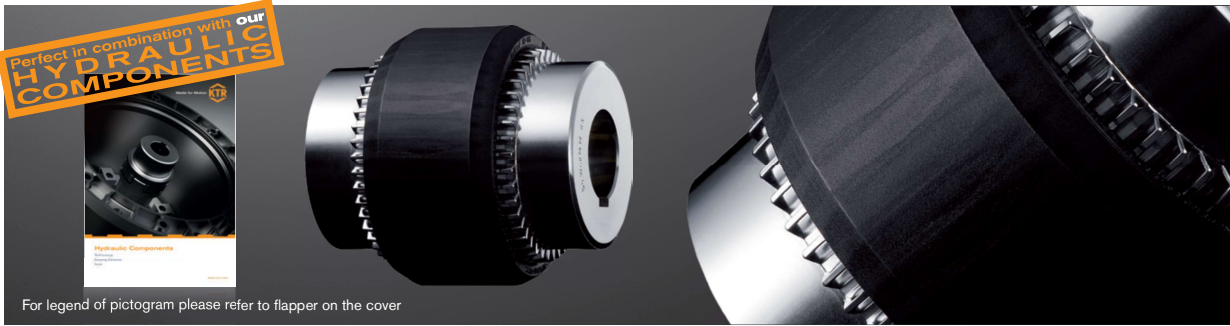
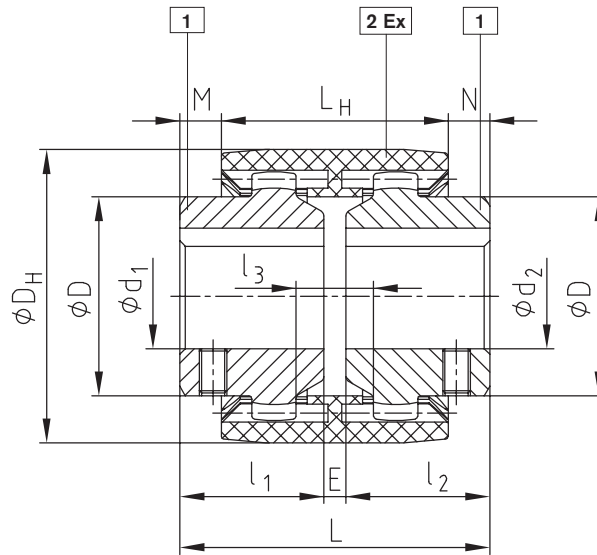
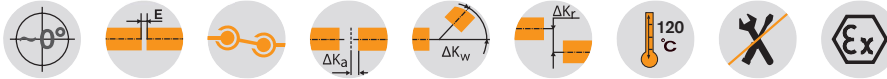


BoWex® M...C Curved-tooth gear coupling®

Compact and maintenance-free



For legend of pictogram please refer to flapper on the cover



Type M...C Ex

BoWex® Type M...C Ex																						
Size	Torque [Nm]			Finish bore d1, d2		Dimensions [mm]											Weight with max. bore [kg]			Mass moment of inertia J with max. bore [kgcm ²]		
	T _{KN}	T _{K max.}	T _{KW}	Pilot bored	Max.	l _{1, l2}	E	L	L _H	M, N	l ₃	D	D _H	Tip circle ØDZ hub	Number of teeth	Hub lengthened max. l _{1, l2}	Sleeve	Hub	Total	Sleeve	Hub	Total
M-14C	15	45	7.5	-	15	23	4	50	37	6.5	10	25	40	33	20	40	0.03	0.07	0.1	0.08	0.09	0.26
M-19C	24	72	12	-	20	25	4	54	37	8.5	10	32	47	39	24	40	0.03	0.1	0.23	0.15	0.16	0.47
M-24C	30	90	15	-	24	26	4	56	41	7.5	14	36	53	45	28	50	0.04	0.14	0.32	0.21	0.36	0.93
M-28C	70	210	35	-	28	40	4	84	46	19	13	44	65	54	34	55	0.08	0.33	0.74	0.65	1.22	3.09
M-32C	90	270	45	-	32	40	4	84	48	18	13	50	75	63	40	55	0.09	0.43	0.95	1.14	2.17	5.48
M-38C	120	360	60	-	38	40	4	84	48	18	13	58	83	69	44	60	0.13	0.55	1.23	1.58	3.55	8.68
M-48C	200	600	100	-	48	50	4	104	50	27	13	68	95	78	50	60	0.23	0.79	1.81	3.9	7.22	18.34
M-65C	560	1680	280	21	65	55	4	114	68	23	16	96	132	110	42	70	0.55	1.9	4.35	21.2	31.8	84.8
M-80C	1000	3000	500	31	90	90	6	186	93	46.5	20	124	178	145	46	-	1.13	5.2	11.53	68.9	150.8	370.5

Ordering example:	BoWex® M-28C	d ₁ Ø20	d ₂ Ø28
	Size and type of coupling	Finish bore H7 keyway to DIN 6885 sheet 1 (JS9)	Finish bore H7 keyway to DIN 6885 sheet 1 (JS9)