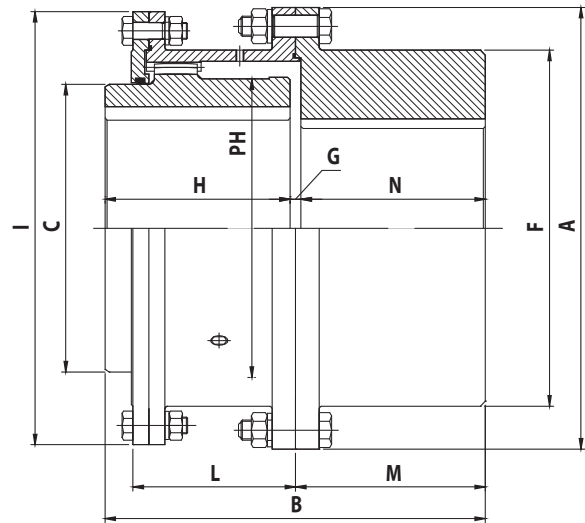
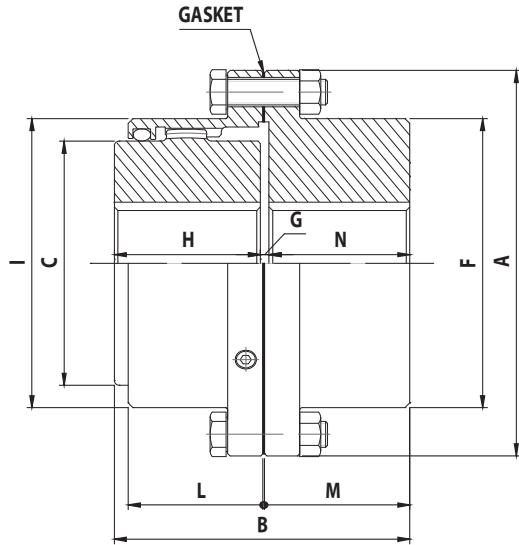


• PG52/PGL52(G52 Type)



SIZE	MAX SPEED (RPM)	BASIC TORQUE (Nm)	BORE DIA (mm)			DIMENSIONS(mm)										CPLG Weight (Kg)	LUBE WT (Kg)
			MAX	MIN		C	F	A	B	C	F	H	I	L	M		
1010PG52	8,000	860	48	60	13	115.9	87	69	83.8	43	83.8	39	41.5	40	4	4.5	0.02
1015PG52	6,500	1,919	60	75	19	152.4	99	86	105.2	49	105.2	48	47.5	46	4	9.1	0.04
1020PG52	5,600	4,190	73	92	25	177.8	124	105	126.5	62	126.5	59	60.0	58	4	15.9	0.07
1025PG52	5,000	6,454	92	111	32	212.7	156	131	154.9	77	154.9	72	76.5	74	5	27.2	0.12
1030PG52	4,400	12,834	105	130	38	239.7	184	152	180.3	91	180.3	84	90.5	88	5	43.1	0.18
1035PG52	3,900	16,696	124	149	51	279.4	213.5	178	211.3	106	211.3	98	105.0	102	5.5	61.2	0.27
1040PG52	3,600	31,167	146	171	64	317.5	243	210	245.4	121	245.4	111	118.0	115	7	99.8	0.47
1045PG52	3,200	34,163	165	194	76	346.1	274	235	274.1	135	274.1	123	135.0	131	8	136.1	0.57
1050PG52	2,900	46,091	178	222	89	388.9	308	254	305.8	153	305.8	141	151.0	147	8	195.0	0.91
1055PG52	2,650	60,392	197	248	102	425.4	349	279	334.3	168	334.3	158	177.0	173	8	263.1	1.13
1060PG52	2,450	77,569	222	267	114	457.2	382	305	366.0	188	366.0	169	190.0	186	8	324.3	1.70
1070PG52	2,150	112,300	254	305	89	527.0	454	343	424.9	221	424.9	196	226.5	220	13	508.0	2.27

SIZE	MAX. SPEED (RPM)	BASIC TORQUE (Nm)	Bore Dia (mm)			DIMENSIONS(mm)											CPLG Weight (Kg)	LUBE WT (Kg)
			MAX	MIN		C	F	A	B	C	F	H	I	L	M	N		
1080PGL52	1,750	147,394	279	343	102	590.6	511	356	450.8	249	571.5	243	255.5	249	368	13	698.5	4.99
1090PGL52	1,550	200,035	305	381	114	660.4	566	394	508.0	276	641.4	265	283	276	419	14	984.5	6.35
1000PGL52	1,450	280,750	343	406	127	711.2	626	445	530.4	305	698.5	294	313	305	470	16	1,251.9	7.71
1100PGL52	1,330	386,032	387	445	140	774.7	682	495	584.2	333	749.3	322	341	333	521	16	1,637.5	9.07
1200PGL52	1,200	491,313	425	495	140	838.2	722	546	647.7	353	825.5	341	361	353	572	16	2,077.5	10.89