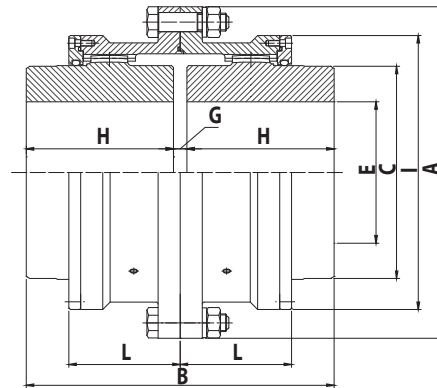
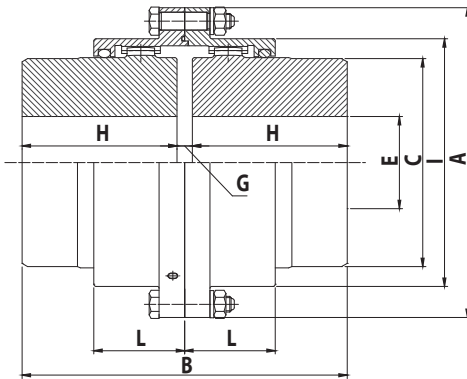


Dimensions

JIS STANDARD

- Type PSS (Gear Double), PCC (Gear Double Large)



SIZE	MAX SPEED (RPM)	BASIC TORQUE (Nm)	BORE DIA (mm)		Dimensions(mm)							WEIGHT (kg)	LUBE WT (kg)	PSS-H (Nm)
			Max	Min	A	B	C	H	I	L	G			
PSS100	3,600	254	25	16	100	88	46	40	67	34	8	3	0.03	802
PSS112	3,600	617	40	16	112	108	58	50	79	40	8	5	0.04	1,420
PSS125	3,600	1,072	50	31	125	134	70	63	92	43	8	7	0.05	2,410
PSS140	3,600	1,486	56	31	140	150	80	71	107	47	8	9	0.07	3,540
PSS160	3,600	2,250	63	31	160	170	95	80	120	52	10	14	0.09	5,090
PSS180	3,600	3,372	71	45	180	190	105	90	134	56	10	19	0.12	7,730
PSS200	3,600	4,913	80	45	200	210	120	100	149	61	10	26	0.15	12,700
PSS224	3,080	6,987	90	51	224	236	145	112	174	65	12	38	0.25	17,800
PSS250	2,650	9,665	100	51	250	262	165	125	200	74	12	56	0.35	24,200
PSS280	2,340	16,555	125	51	280	294	190	140	224	82	14	83	0.48	32,300
PSS315	1,980	31,653	160	112	315	356	225	170	260	98	16	135	0.77	49,700
PSS355	1,800	39,706	180	125	355	396	250	190	288	108	16	184	0.94	65,800
PSS400	1,570	54,737	200	140	400	418	285	200	329	114	18	261	1.36	92,400
PCC450	1,540	74,705	200	140	450	418	290	200	372	151	18	304	1.79	174,000
PCC500	1,320	117,186	236	170	500	494	335	236	425	168	22	453	2.64	261,000
PCC560	1,170	166,784	265	190	560	552	385	265	475	187	22	664	3.23	408,000
PCC630	990	260,501	280	200	630	658	455	315	548	213	28	1,020	4.93	581,000
PCC710	870	376,696	355	250	710	738	510	355	622	242	28	1,460	6.63	789,000
PCC800	780	537,311	400	280	800	832	570	400	690	267	32	2,090	9.35	1,110,000
PCC900	840	771,115	475	315	900	932	670	450	792	295	32	3,030	12.63	1,510,000
PCC1000	760	1,189,219	510	355	1,000	1,040	720	500	858	322	40	4,120	13.75	1,970,000
PCC1120	682	1,598,179	600	400	1,120	1,160	840	560	990	360	40	5,920	15.45	2,450,000
PCC1250	610	2,120,000	710	500	1,250	1,460	960	710	1,126	399	40	9,410	18.25	3,250,000