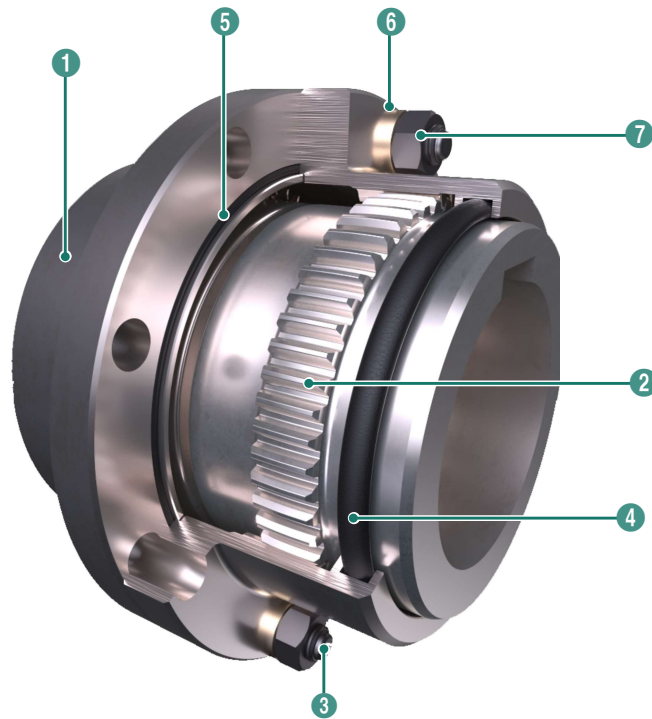


Parts



Name of each part

1 Sleeve (A+B) : S45C

2 Flex Hub : S45C

3 Reamer Bolt : S45C-H

4 O-ring : NBR

5 Gasket : UG or O-ring : NBR

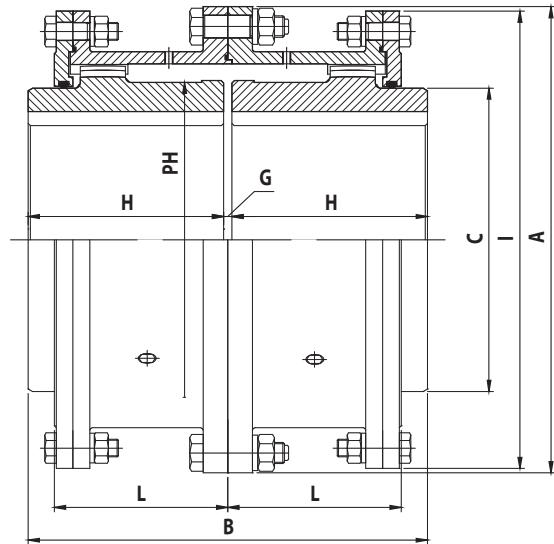
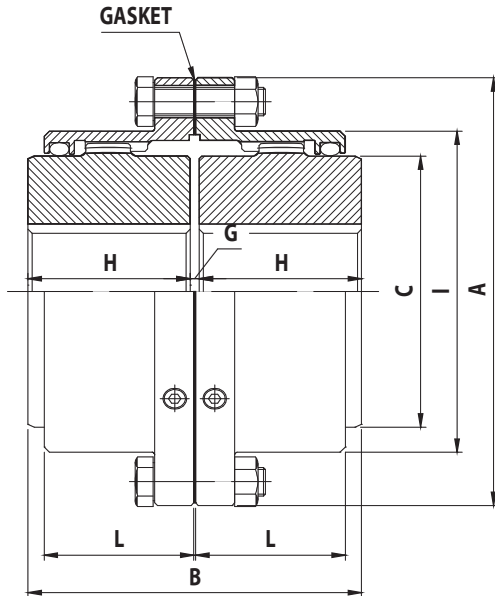
6 Spring Washer : HSWR62B

7 Hex. Nut : SS41

Dimensions

AGMA STANDARD

- PG20/PGL20(G20 Type)



SIZE	MAX SPEED (RPM)	BASIC TORQUE (Nm)	BORE DIA (mm)		DIMENSIONS (mm)							CPLG Weight (Kg)	LUBE WT (Kg)
			MAX	MIN	A	B	C	H	I	L	G		
1010PG20	8,000	859	48	13	115.9	89	69	43	83.8	39	3	4.5	0.04
1015PG20	6,500	1,918	60	19	152.4	101	86	49	105.2	48	3	9.1	0.07
1020PG20	5,600	4,187	73	25	177.8	127	105	62	126.5	59	3	15.9	0.11
1025PG20	5,000	6,450	92	32	212.7	159	131	77	154.9	72	5	29.5	0.23
1030PG20	4,400	12,825	105	38	239.7	187	152	91	180.3	84	5	43.1	0.36
1035PG20	3,900	16,684	124	51	279.4	218	178	106	211.3	98	6	68.0	0.54
1040PG20	3,600	31,146	146	64	317.5	248	210	121	245.4	111	6	97.5	0.91
1045PG20	3,200	34,140	165	76	346.1	278	235	135	274.1	123	8	136.1	1.04
1050PG20	2,900	46,060	178	89	388.9	314	254	153	305.8	141	8	190.5	1.77
1055PG20	2,650	60,352	197	102	425.4	344	279	168	334.3	158	8	249.5	2.22
1060PG20	2,450	77,516	222	114	457.2	384	305	188	366.0	169	8	306.2	3.18
1070PG20	2,150	114,509	254	89	527.0	451.5	343	221	424.9	196	9.5	485.4	4.35

SIZE	MAX SPEED (RPM)	BASIC TORQUE (Nm)	BORE DIA (mm)		DIMENSIONS (mm)							CPLG Weight (Kg)	LUBE WT (Kg)	
			MAX	MIN	A	B	C	H	I	L	PH			G
1080PGL20	1,750	149,033	279	102	590.6	507.5	356	249	571.5	243	368	9.5	703.1	9.53
1090PGL20	1,550	201,469	305	114	660.4	565	394	276	641.4	265	419	13	984.3	12.25
1000PGL20	1,450	281,749	343	127	711.2	623	445	305	698.5	294	470	13	1302.0	14.97
1100PGL20	1,330	386,957	387	140	774.7	679	495	333	749.3	322	521	13	1678.3	17.69
1200PGL20	1,200	493,773	425	152	838.2	719	546	353	825.5	341	572	13	2113.8	20.87