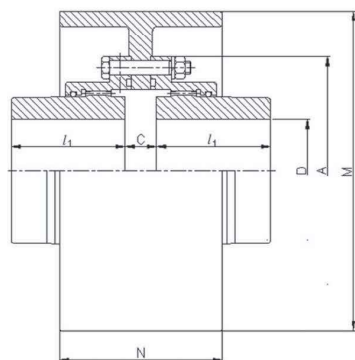
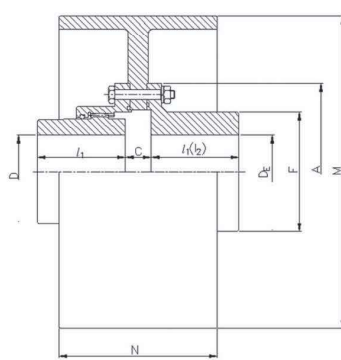


■ Dimensions

Brake Drum Type

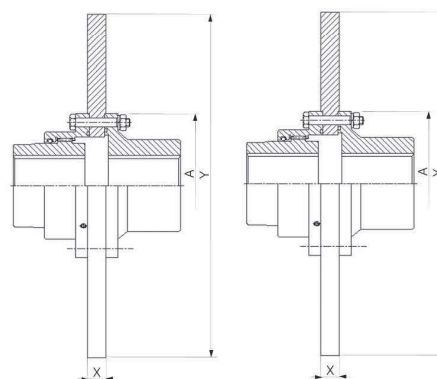


Jac-SSMB
Jac-GDBW



Jac-SEMB
Jac-GSBW

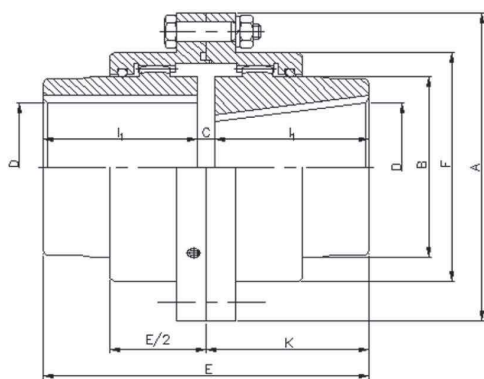
Brake Disc Type



<i>Jac-SSMB</i>					DRUM SIZE		<i>Jac-GDBW, GSBW</i>						
Size	l_1	C	D	DE	M	N	DE	D	C	l_1	l_2	A	Size
			max/min	max/min			max/min	max/min					
140	63	24	56/22	63/22	200	100	75/19	60/19	16	49	46	152	15G
160	80	26	65/22	75/22			95/25	73/25	16	62	58	178	20G
180	90	29	75/32	80/32	250	125	113/32	92/32	19	77	74	213	25G
200	100	29	85/32	95/32									
224	112	31	100/42	105/42	315	160	130/38	105/38	19	91	88	240	30G
250	125	31	115/42	125/42									
280	140	31	135/42	150/42	355	180	149/51	124/51	25	106	102	279	35G
315	160	41	160/100	180/100	400	200	171/64	146/64	25	121	115	318	40G
355	180	43	180/125	200/125	450	224	194/76	165/76	27	135	131	346	45G
400	200	49	200/140	236/140	500	250	222/89	178/89	33	153	147	389	50G

* 'M' and 'N' are variable according to the space of machine.

Mill Motor Type



Jac-SMM

Size	DIMENSIONS						GD ² (kgf·m ²)
OUTSIDE Dia A	E	l_1	l_2	C	K ₁	K ₂	
SMM 125(a)	157	50	75	32	43	66	0.038
SMM 125(b)	172	50	90	32	43	66	0.039
SMM 140	185	63	90	32	47	72	0.066
SMM 160	220	80	100	40	52	82	0.123
SMM 180	246	90	115	41	56	87	0.208
SMM 200	260	100	115	45	61	93	0.336
SMM 224	289	112	125	52	65	102	0.637
SMM 250	305	125	125	55	74	105	1.09
SMM 280(a)	339	140	140	59	82	115	2.09
SMM 280(b)	339	140	150	49	82	115	2.13
SMM 315(a)	386	160	170	56	98	128	4.27
SMM 315(b)	421	160	185	76	98	143	4.42
SMM 355	491	180	235	76	108	155	7.79