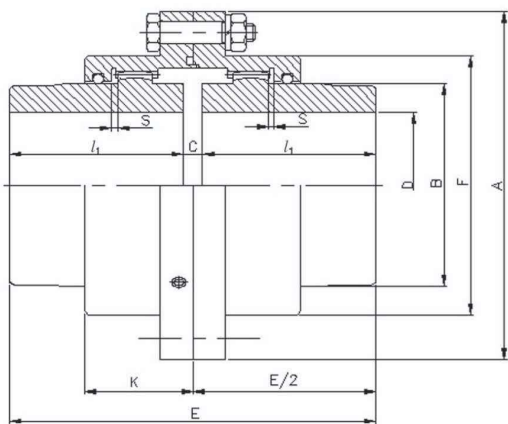
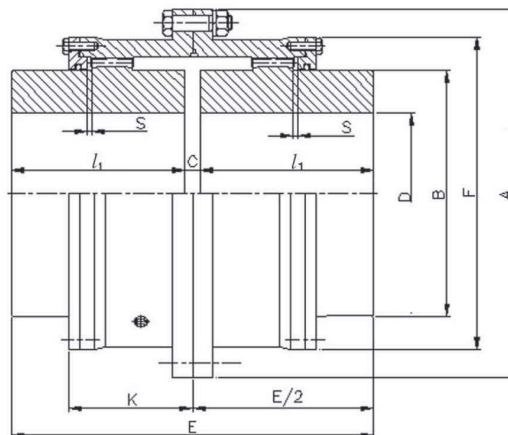


■ Dimensions (KS & JIS Standard)

Jac-SSM



Jac-CCM



SIZE	Torque Rating (kgf · m)	Max Speed (rpm)	Dimensions(mm)										GREASE Q'TY (l)	Weight (kg)	GD ² (kgf · m ²)
			Bore D		E	l ₁	C	B	F	K	S				
			Min	Max											
SSM 112	80.3	4000	17	40	108	50	8	58	79	40	2	0.055	4.3	0.0198	
SSM 125	142	4000	22	50	134	63	8	70	92	43	2.5	0.072	6.6	0.0353	
SSM 140	205	4000	22	56	150	71	8	80	107	47	2.5	0.11	9.3	0.0612	
SSM 160	314	4000	22	65	170	80	10	95	120	52	3	0.14	14	0.113	
SSM 180	482	4000	32	75	190	90	10	105	134	56	3	0.18	19	0.191	
SSM 200	689	3810	32	85	210	100	10	120	149	61	3	0.24	26	0.315	
SSM 224	1000	3410	42	100	236	112	12	145	174	65	4	0.36	39	0.599	
SSM 250	1470	3050	42	115	262	125	12	165	200	74	4	0.53	55	1.08	
SSM 280	2340	2720	42	135	294	140	14	190	224	82	4.5	0.69	81	2.06	
SSM 315	3680	2420	100	160	356	170	16	225	260	98	5.5	1.1	129	4.24	
SSM 355	5550	2150	125	180	396	190	16	250	288	108	5.5	1.3	177	7.13	
SSM 400	7790	1900	140	200	418	200	18	285	329	114	6.5	2.0	242	12.5	
CCM 450	11000	1690	140	205	418	200	18	290	372	151	5	2.6	298	16.6	
CCM 500	16600	1520	170	250	494	236	22	335	424	168	6	3.8	446	36.9	
CCM 560	25500	1360	190	280	552	265	22	385	472	187	6.5	4.6	642	67.6	
CCM 630	42000	1210	224	325	658	315	28	455	544	213	8	6.7	1010	137	
CCM 710	61200	1070	250	360	738	355	28	510	622	242	8.5	9.4	1440	250	
CCM 800	87500	950	280	405	832	400	32	570	690	267	9.5	13	2030	441	
CCM 900	125000	840	315	475	932	450	32	670	792	295	10.5	17	3030	860	
CCM 1000	171000	760	355	510	1040	500	40	720	858	322	12	23	4120	1380	
CCM 1120	240000	682	400	600	1160	560	40	840	990	360	13	31	5920	2650	
CCM 1250	331000	610	500	710	1460	710	40	960	1126	399	14	45	9410	5290	