

# JAW COUPLING

## ■ Distinctive Features

1. Torsionally flexible and designed for positive torque transmission.  
They are puncture-proof. Operational vibrations and shock are efficiently attenuated and reduced.
2. Owing to their linear design, the maximum twisting angle with jac couplings of any size amounts to 5°. Fig.1 shows the capacity of the elastomeric, which is related to its attenuating effect.
3. Setting and repairing is easy.

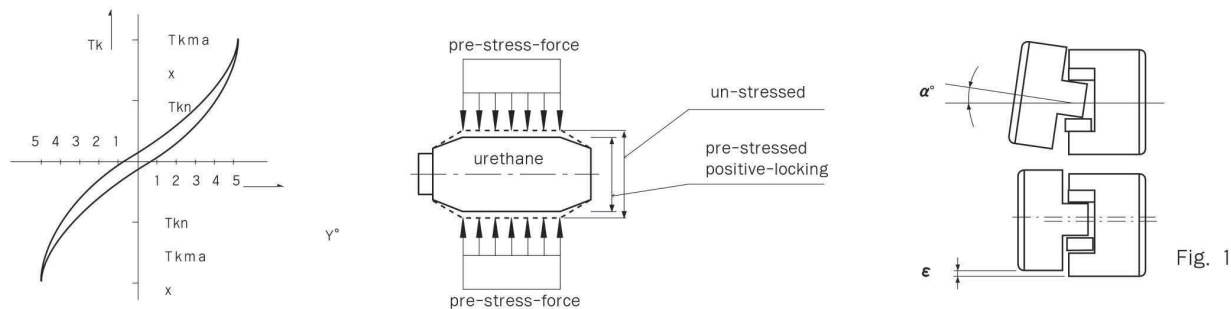
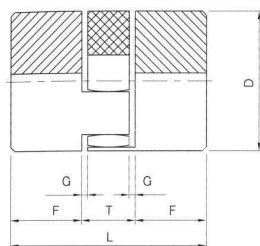
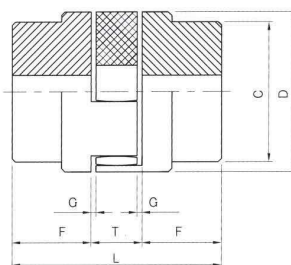


table 1.

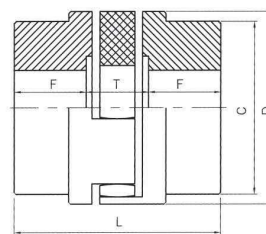
| Size No.                               | 050  | 070 | 090 | 0010 | 0020 | 2035-A | 2035 | 3545 | 4560 | 6070 | 7080 | 8090 |
|--|------|-----|-----|------|------|--------|------|------|------|------|------|------|
| Angular misalignment( $\alpha^\circ$ ) | 0.15 | 0.2 | 0.4 | 0.8  | 1.0  | 1.0    | 1.4  | 1.4  | 1.4  | 1.4  | 1.4  | 1.4  |
| Parallel misalignment( $\epsilon$ mm)  | 1.3  |     |     |      |      |        |      |      |      |      |      |      |



Only CR050~CR090



Only CR0010~CR3545



Only CR4560~CR90100

## ■ Dimensions & technical Data

| Size      | Bore Dia(mm) |     | Basic Torque (kgf · m) | Torsion angle | Dimensions(mm) |     |      |    |     |     | WEIGHT (kg) |
|-----------|--------------|-----|------------------------|---------------|----------------|-----|------|----|-----|-----|-------------|
|           | min          | max |                        |               | C              | D   | F    | T  | L   | G   |             |
| CR 050    | 5            | 11  | 0.4                    | 3.2°          | -              | 25  | 12   | 11 | 35  | 1   | 0.08        |
| CR 070    | 7            | 14  | 1                      |               | -              | 35  | 18.5 | 13 | 50  | 1.5 | 0.3         |
| CR 090    | 7            | 22  | 1                      |               | -              | 40  | 25   | 16 | 66  | 2   | 0.5         |
| CR 0010   | 11           | 19  | 2.5                    |               | 42             | 48  | 24   | 17 | 65  | 1.5 | 0.5         |
| CR 0020   | 14           | 24  | 3.4                    |               | 50             | 58  | 27   | 18 | 72  | 1.5 | 0.9         |
| CR 2035-A | 19           | 28  | 12                     |               | 58             | 68  | 35   | 20 | 90  | 1.5 | 1.3         |
| CR 2035   | 19           | 38  | 32                     |               | 68             | 78  | 35   | 22 | 92  | 1.5 | 2.5         |
| CR 3545   | 28           | 45  | 65                     |               | 88             | 98  | 38.5 | 29 | 106 | 4   | 4.4         |
| CR 4560   | 38           | 60  | 90                     |               | 98             | 118 | 45   | 30 | 120 | 3   | 7.8         |
| CR 6070   | 42           | 75  | 125                    |               | 115            | 135 | 46   | 33 | 125 | 3.5 | 10          |
| CR 7080   | 65           | 100 | 293                    |               | 130            | 160 | 66   | 45 | 177 | 5   | 19.5        |
| CR 8090   | 65           | 110 | 520                    |               | 150            | 200 | 105  | 45 | 255 | 5   | 36          |
| CR 90100  | 65           | 110 | 790                    |               | 180            | 230 | 110  | 50 | 270 | 6   | 39          |