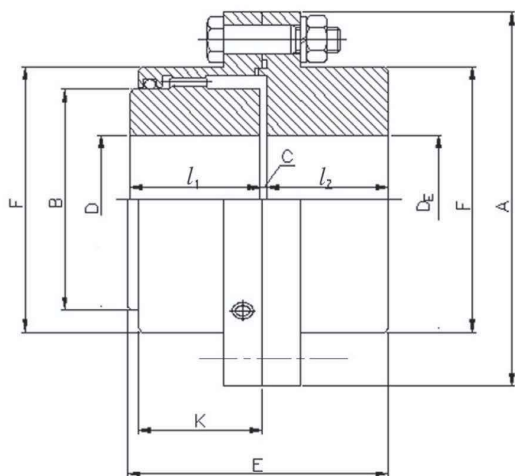
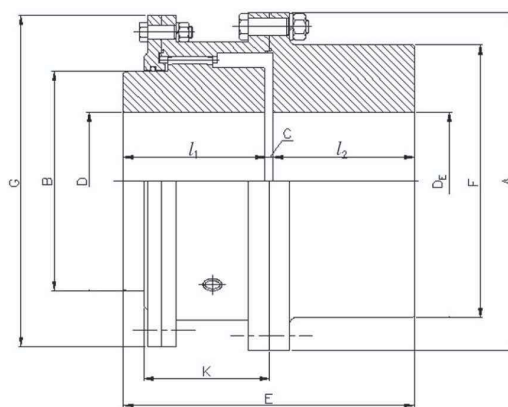


■ Dimensions (AGMA Standard)

Jac-GS



Jac-GSL



Size	HP Per 100 rpm	Max. Speed (rpm)	Basic Torque (kgf · cm)	Bore D(mm)			Dimensions(mm)										Weight (kg)	Grease wt(kg)
				Max		Min	A	E	l ₁	B	F	K	l ₂	G	C			
				D _E	D													
10GS	12	8,000	8,594	60	48	13	116	87	43	69	84	39	40		4	4.5	0.02	
15GS	27	6,500	19,337	75	60	19	152	99	49	86	105	48	46		4	9.1	0.04	
20GS	50	5,600	35,810	92	73	25	178	124	62	105	126	59	58		4	15.9	0.07	
25GS	90	5,000	64,458	111	92	32	213	156	77	131	155	72	74		5	27.2	0.12	
30GS	150	4,400	107,430	130	105	38	240	184	91	152	180	84	88		5	43.1	0.18	
35GS	230	3,900	164,726	149	124	51	279	213.5	106	178	211	98	102		5.5	61.2	0.27	
40GS	350	3,600	250,670	171	146	64	318	243	121	210	245	111	115		7	99.8	0.47	
45GS	480	3,200	343,776	194	165	76	346	274	135	235	274	123	131		8	136.1	0.57	
50GS	650	2,900	465,530	222	178	89	389	309	153	254	306	141	147		9	195.0	0.91	
55GS	850	2,650	608,770	248	197	102	425	350	168	279	334	158	173		9	263.1	1.13	
60GS	1,100	2,450	787,820	267	222	114	457	384	188	305	366	169	186		10	324.3	1.70	
70GSL	1,600	2,150	1,145,920	305	254	89	527	454	221	343	425	196	220	517	13	508.0	2.27	
80GSL	2,100	1,750	1,504,020	343	279	102	591	511	249	356	451	243	249	572	13	698.5	4.99	
90GSL	2,850	1,550	2,041,170	381	305	114	660	566	276	394	508	265	276	641	14	984.5	6.35	
100GSL	4,000	1,450	2,864,800	406	343	127	711	626	305	445	530	294	305	699	16	1251.9	7.71	
110GSL	5,500	1,330	3,939,400	445	387	140	775	682	333	495	584	322	333	749	16	1637.5	9.07	
120GSL	7,000	1,200	5,013,400	495	425	152	838	722	353	546	648	341	353	826	16	2077.5	10.89	