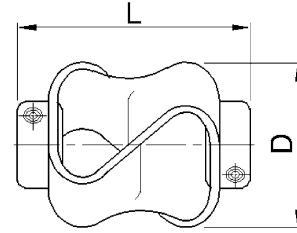
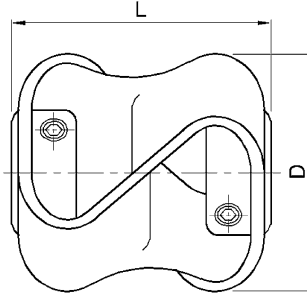


# Flex-P

## Double Loop Flexible Coupling



### DIMENSIONS & ORDER CODES

Size	Steel screws	Stainless steel screws	Dimensions					Fasteners		
	Order Code		Max Diameter in. (mm)	Length L in. (+/- 1.0 mm)	Bore length in. (mm)	Max Bores mm	Mass kg x 10-3	Size	Torque lb.-in. (Nm)	A/F in. (mm)
10	047.10	-	1.06 (27)	1.06 (27)	0.31 (7.9)	9.53	25	M3	8.3 (0.9)	0.17 (1.5)
	-	049.10							2.8 (0.3)	
20	047.20	-	1.89 (48)	1.89 (48)	0.50 (12.7)	12.7	92	M4	19 (2.2)	0.23 (2.0)
	-	049.20							17 (2.0)	
30	047.30	-	2.13 (54)	2.17 (55)	0.63 (16.0)	16.0	124	M5	40 (4.6)	0.28 (2.5)
	-	049.30							18 (2.1)	
40	047.40	-	2.20 (56)	2.20 (56)	0.63 (16.0)	16.0	136	M6	67 (7.6)	0.34 (3.0)
	-	049.40							32 (3.7)	

### PERFORMANCE

Size	Max Torque 1 lb.-in. (Nm)	Max Torque 2 lb.-in. (Nm)	max misalignment/displacement		
			Angular deg	Radial in. (mm)	Axial in. (+/- mm)
10	4.43 (0.5)	7.08 (0.8)	10	0.10 (2.6)	0.18 (4.5)
20	15.9 (1.8)	26.6 (3)	15	0.13 (3.2)	0.30 (7.5)
30	44.3 (5)	70.8 (8)	15	0.13 (3.2)	0.33 (8.5)
40	88.5 (10)	159.3 (18)	15	0.13 (3.2)	0.43 (11)

Torque 1 = torque at maximum displacement

Torque 2 = torque at 1 deg. angular, 2mm axial and 0.5mm radial displacement

### Materials & Finishes

**Hubs:** Stainless Steel 304 [1.4301] natural finish  
**Flexing Element:** Hytrel  
**Fastener:** 047 Type: Alloy steel, black oiled  
 049 Type: Stainless steel

### Temperature Range

-40°F to +212°F (-40°C to +100°C)

### Maximum Rotational Speed

3000 rev/min

### STANDARD BORES\*

Sizes indicated in parenthesis are metric (mm).

Size	ØB1, ØB2 +0.002/ -0 (+0.05mm/-0mm)																
	(3)	1/8"	(4)	3/16"	(5)	(6)	1/4"	5/16"	(8)	3/8"	(10)	(12)	1/2"	(14)	(15)	5/8"	(16)
10	●	●	●	●	●	●	●	●	●	●							
20						●	●	●	●	●	●	S	S				
30										●	●	●	●	S	S	S	S
40										●	●	●	●	S	S	S	S
<b>Bore Ref</b>	14	16	18	19	20	22	24	27	28	31	32	35	36	38	40	41	42

\* Couplings with dissimilar bores are non-standard

S = Plain bore only, keyway no permissible size 10